

SPOKJ Sponge

Instruction manual

1 – Package Contents

The packaging includes:

- Operating instructions
- The Spokj Sponge SJ product

2 – Product description

Spokj Sponge SJ is a tool for removing the residual milk on the steam wand, after frothing the milk. An anti-burn and waterproof polyurethane shell and a polyurethane sponge, coupled with a glue for food, compose Spokj Sponge SJ. The function of Spokj sponge SJ is to remove the residual milk on the steam wand of the coffee machine.

3 – Operating instructions

3.1 Wash Spokj sponge SJ in the dishwasher before use 1 or 2 times a day.

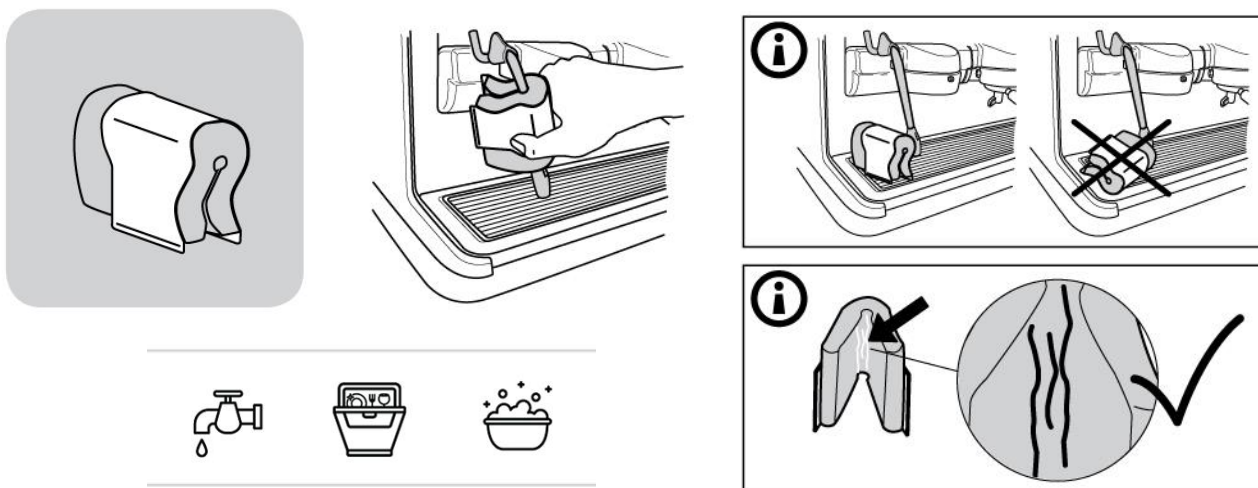
3.2 Correctly position the sponge with the flaps downwards, for insulation from the worktop (see illustrative drawing)

WARNINGS:

3.3 Use gently, do not scratch or repeatedly rub hard.

3.4 recommended for use with a damp sponge

3.5 Settling cracks on the sponge, especially on the inside, are caused by the high heat of the lance and do not affect the normal use or performance of the product. It is not recommended to open the shell out to avoid TEARING OR LACERATIONS.



4 – More information

The product is entirely made of polyurethane, an inert non-biodegradable material. The material and structure of Spokj sponge SJ are the guarantee of long-lasting functionality (under normal conditions of use). In any case, if flaking, cracks, detachment of material or abrasions are detected, proceed with the replacement of Spokj sponge SJ with a new one. For disposal purposes, the product is similar to solid urban waste, in compliance with all international, regional and local regulations.